

CASE STUDY

Machine Vision Solutions for Food & Beverage Industry

Component: 2 types of plastic moulding components

Performance: Accurate inspection at a rate of 1200 components/minute

Introduction

RNA were contacted with a request for a fully automated quality control and inspection system to handle and inspect plastic moulding components. The request was from a recently built UK based production requirement for a global leader in the food and beverage industry.

The system must handle with minimum changeover two components that are physically different in size and shape. A major consideration in this application was the complexity and fragility of the component parts. The system must not cause any damage to these parts, which have a detailed periphery.

The system must inspect from all three planes: 1. Top for damage and OCR (optical character recognition); 2. Bottom for diameter and damage; 3. Side for damage, height and profile. The system must detect and expel 100% of those reject components, but critically must not damage the components.

Additionally, the customer required a complete system with minimum requirements below:

1. The system must be capable of operating at up to a rate of 1200 parts/minute
2. It must be designed to meet food and GMP standards.

Solution

To enable the system to deliver 1200 parts per minute the design utilised a twin headed system with duplicate rotary feeders, conveyors, glass disc and reject segregation, with a common good part collection. This handling solution involved the innovative idea of a “rotating glass disc”.

The components are fed from a centrifugal feeder, onto a conveyor system and fed individually onto a rotating glass disc. Due to the design of the components, they have a unique tendency to “castle or double up”, causing problems in the handling and inspection, resulting in false rejects. These problems are one of RNA strengths and were solved with the expert use of gating and a non contact accumulation system, while still ensuring that there was no damage caused to the components.

An encoder and trigger sensor were fitted on the rotating glass disc. Once a component part had passed through the trigger sensor an encoder count is stored. The PLC then tracks the components around the disc triggering the appropriate cameras and ejecting reject components. Good components continue around the disk being gently swept off down a chute into a collection box.

A PLC monitors a count of all good and reject the components from both heads which maintain correlation over continuous 24/7 production.

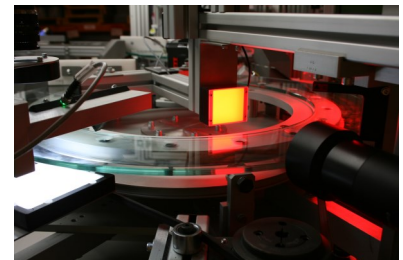
The cameras used in the inspection system utilise the latest technology high resolution cameras with Telecentric lens and lighting. This was required to achieve repeatability of measured values, with a one-micron resolution incorporating 20 microns accuracy over 10,000 measured parts.

Key features & benefits

The System:-

- Provides a complete solution that provides minimum changeover between components that are different in size and shape
- Offers minimum damage at maximum feed rates of up to and over 1200 parts per minute
- Offers cost-saving benefits such as labour cost savings and high production speeds
- Offers additional incremental benefits such as reduced downtime, improved quality control, raised standards of health & safety and better hygiene standard for food products.

All of these benefits deliver a short payback period and impressive return on investment.



<< rotating glass disc

