

PBC



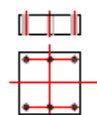
Precision Belt Carrier

PBC

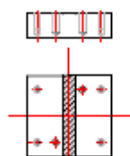
CATALOGO APRILE 2015

METRIC SERIE

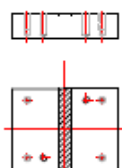
PBC 60



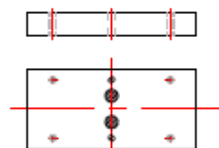
PBC 80



PBC 100



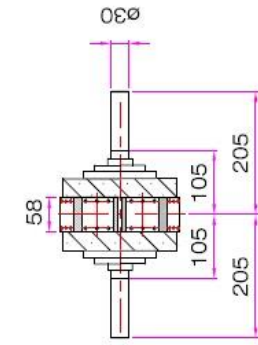
PBC 160



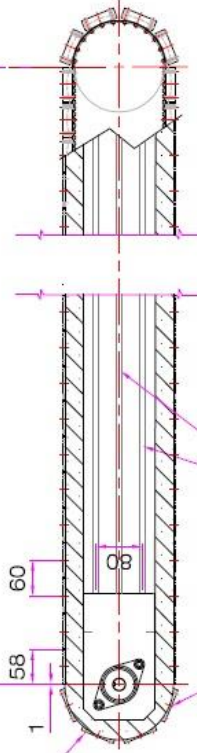
ITALPLANT PBC PRECISION BELT CARRIERS

**LUNGHEZZE STANDARD
STANDARD LENGTHS**
= 960, 1500, 2100

Lunghezze personalizzate disponibili su richiesta
Custom lengths available upon request

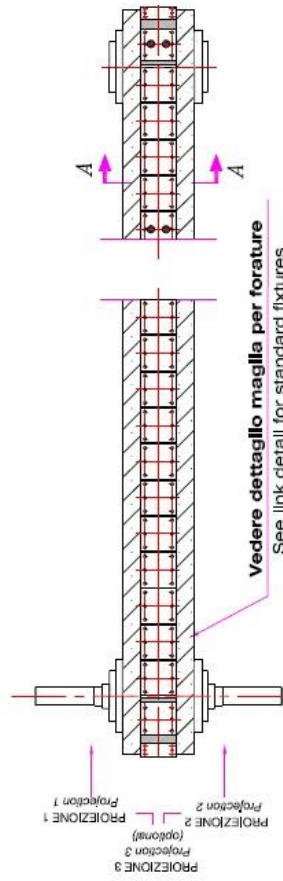


Testate 8 pallet
8 pallets heads



Raggio primitivo 152.78 (6.01")
Pitch radius 152.78 (6.01")

Slots for supporting legs - M8 screws
Scanalature per supporti - viti M8



Vedere dettaglio maglia per forature
See link detail for standard fixtures



PBC 60

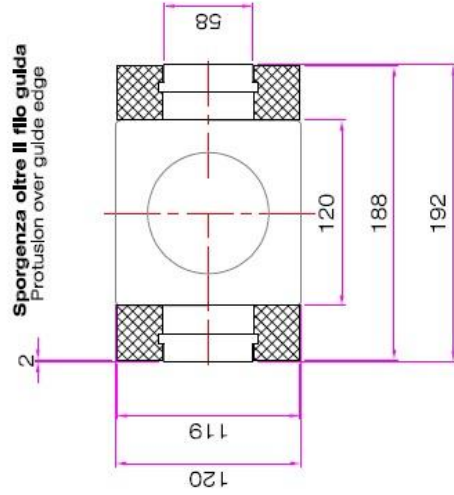
ITALPLANT
TRASPORTATORI A CINGHIA
PRECISION BELT CONVEYORS

MODULO
Module

ITALPLANT srl si riserva di modificare le dimensioni senza preavviso
ITALPLANT srl reserves to modify quotes without advice

ITALPLANT PBC PRECISION BELT CARRIERS

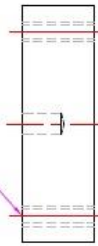
SEZIONE TIPICA "A-A"
Standard section "A-A"



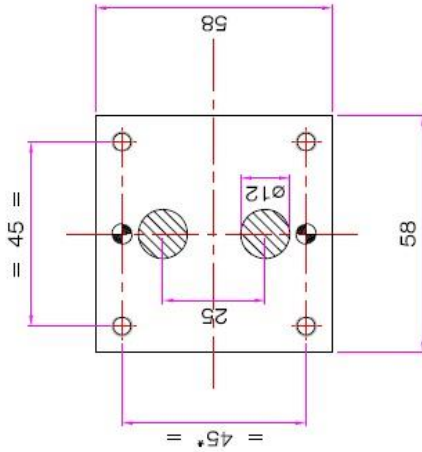
ITALPLANT srl si riserva di modificare le dimensioni senza preavviso
ITALPLANT srl reserves to modify quotes without advice

DETTAGLIO PALLET STANDARD
Standard pallet detail

N°4 THROUGH TAPPED HOLES M6
N°4 FORI FILETTATI M6 PASSANTI



N°2 HOLES ø5H8 FOR DOWEL depth 10
N°2 FORI ø5H8 PER SPINA prof. 10



* (tolleranza solo per fori spina)
tolerance only for dowel holes)

PBC 60



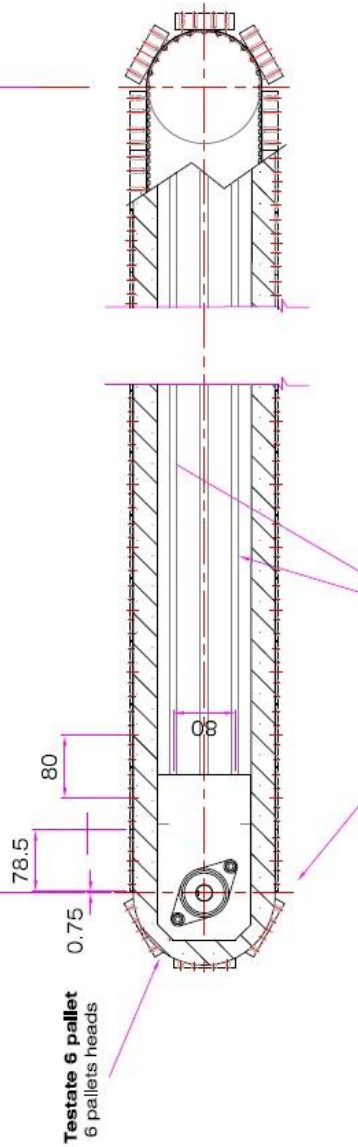
ITALPLANT
TRASPORTATORI A CINGHIA
PRECISION BELT CONVEYORS

Custom mounting holes on demand - dashed areas excluded
Forature personalizzabili su richiesta - escluse zone tratteggiate

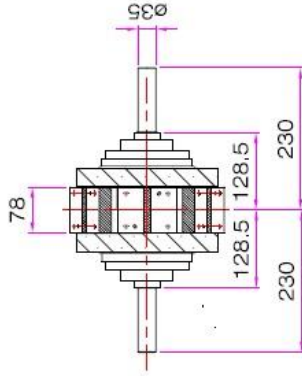
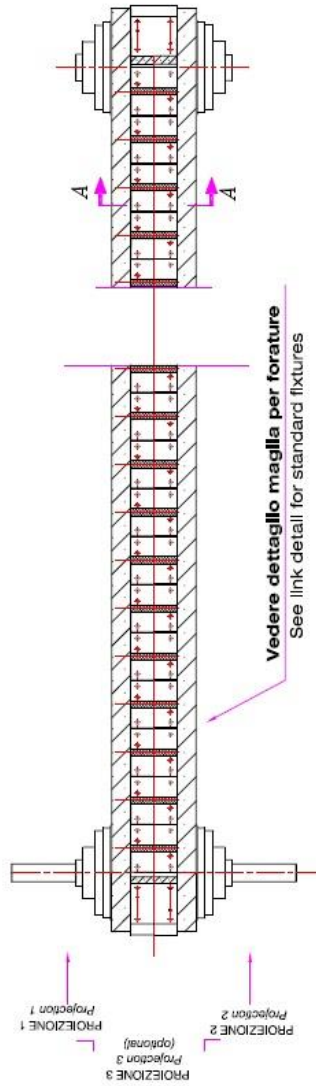
ITALPLANT PBC PRECISION BELT CARRIERS

LUNGHEZZE STANDARD STANDARD LENGTHS

≡ 1200, 2000, 4000
Lunghezze personalizzate disponibili su richiesta
Custom lengths available upon request



Raggio primitivo 152.78 (6.01')
Pitch radius 152.78 (6.01')



PBC 80

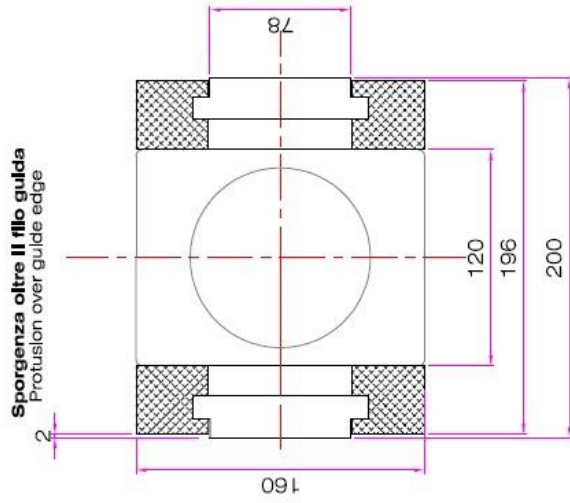
ITALPLANT
TRASPORTATORI A CINCHIA
PRECISION BELT CONVEYORS

MODULO
Module

ITALPLANT srl si riserva di modificare le dimensioni senza preavviso
ITALPLANT srl reserves to modify quotes without advice

ITALPLANT PBC PRECISION BELT CARRIERS

SEZIONE TIPICA "A-A"
Standard section "A-A"



ITALPLANT srl si riserva di modificare le dimensioni senza preavviso
ITALPLANT srl reserves to modify quotes without advice

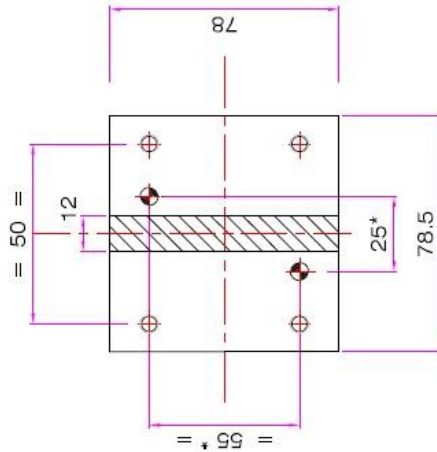


DETTAGLIO PALLET STANDARD
Standard pallet detail

N°4 TAPPED HOLES M6 depth 15
N°4 FORI FILETTATI M6 prof. 15



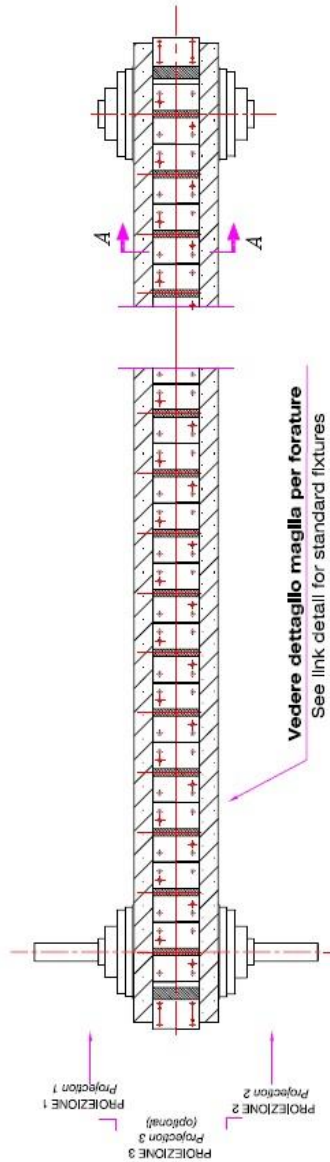
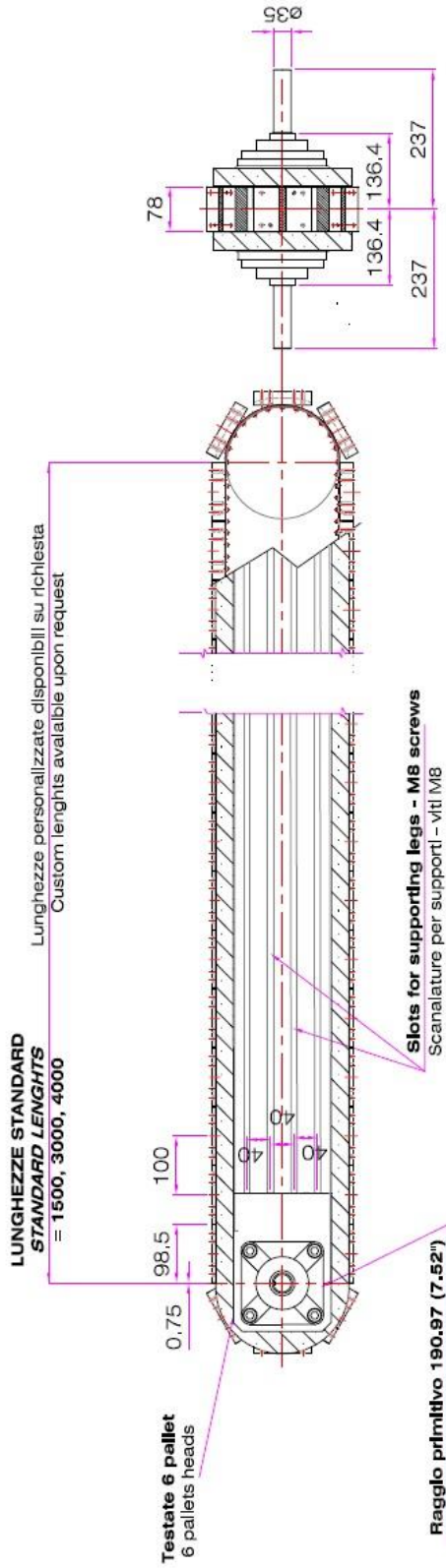
N°2 HOLES ø6H8 FOR DOWEL depth 18
N°2 FORI ø6H8 PER SPINA prof. 18



* (toleranza solo per fori spine)
(tolerance only for dowel holes)

Custom mounting holes on demand - dashed areas excluded
Forature personalizzabili su richiesta - escluse zone tratteggiate

ITALPLANT PBC PRECISION BELT CARRIERS



PBC 100



ITALPLANT
TRASPORTATORI A CINGHIA
PRECISION BELT CONVEYORS

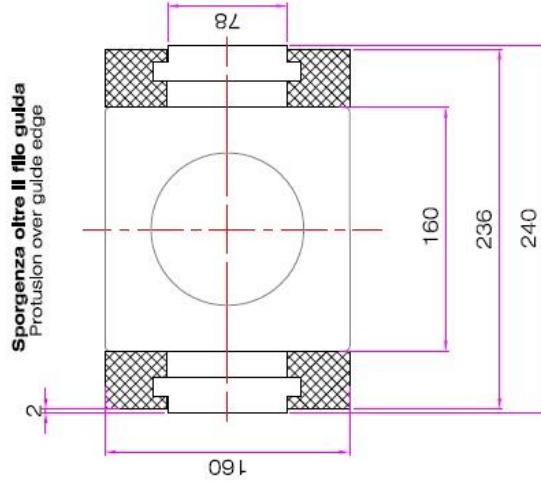
MODULO
Module

ITALPLANT srl si riserva di modificare le dimensioni senza preavviso
ITALPLANT srl reserves to modify quotes without advice

ITALPLANT PBC PRECISION BELT CARRIERS

SEZIONE TIPICA "A-A"
Standard section "A-A"

ITALPLANT srl si riserva di modificare le dimensioni senza preavviso
ITALPLANT srl reserves to modify quotes without advice

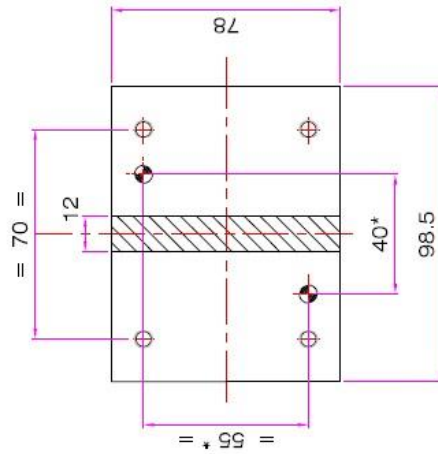


DETTAGLIO PALLET STANDARD
Standard pallet detail

N°4 TAPPED HOLES M6 depth 15
N°4 FORI FILETTATI M6 prof. 15



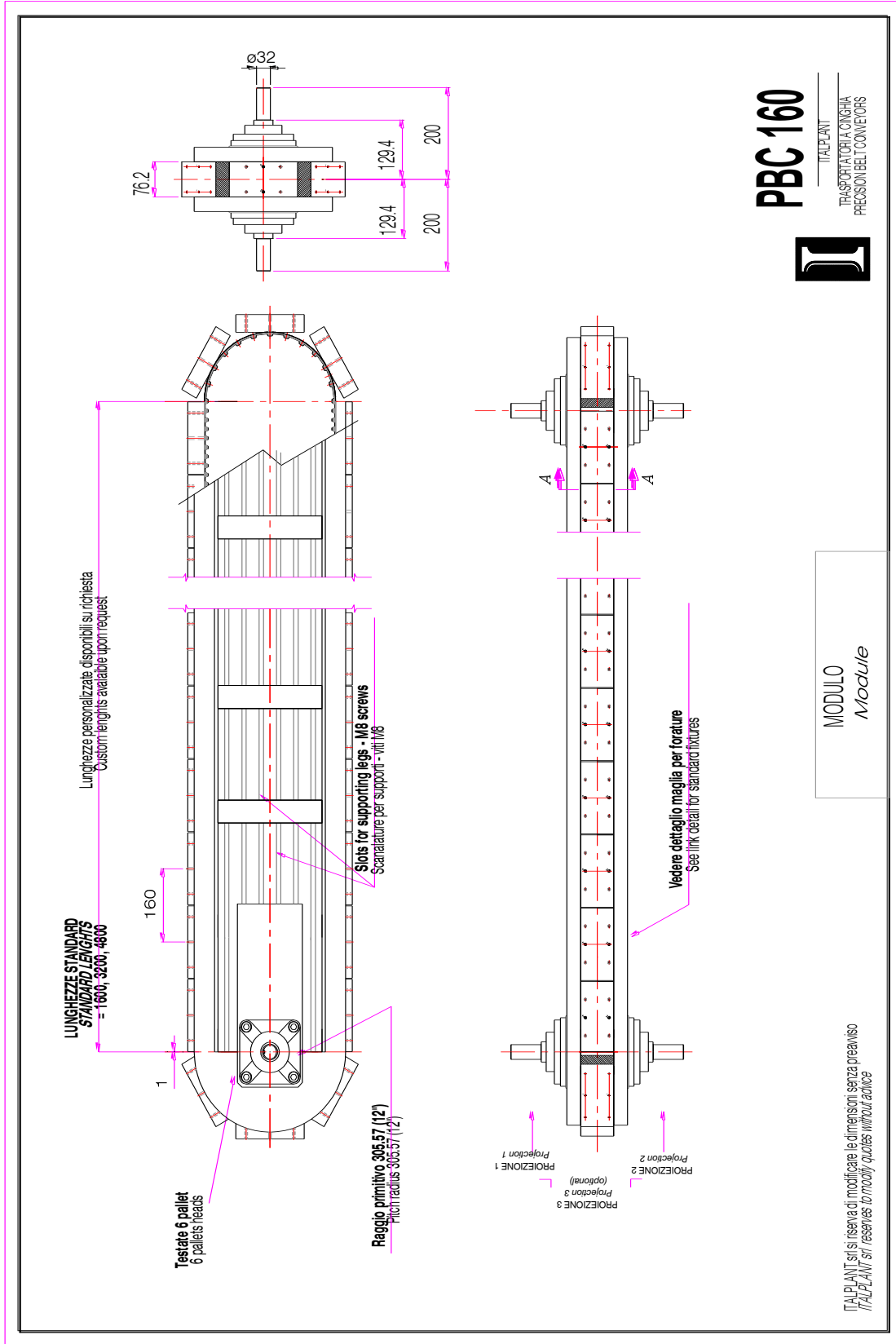
N°2 HOLES ø6H8 FOR DOWEL depth 19
N°2 FORI ø6H8 PER SPINA prof. 19



*(tolleranza solo per fori spine)
tolerance only for dowel holes)

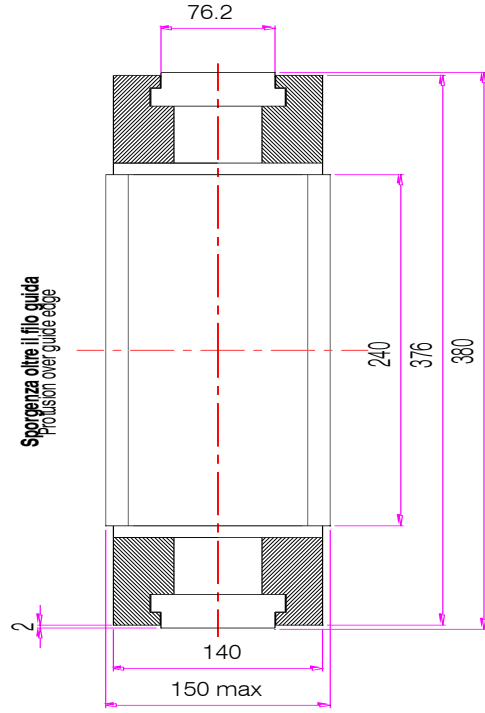
Custom mounting holes on demand - dashed areas excluded
Forature personalizzabili su richiesta - escluse zone tratteggiate

ITALPLANT PBC PRECISION BELT CARRIERS



ITALPLANT PBC PRECISION BELT CARRIERS

SEZIONE TIPICA "A-A"
Standard section "A-A"



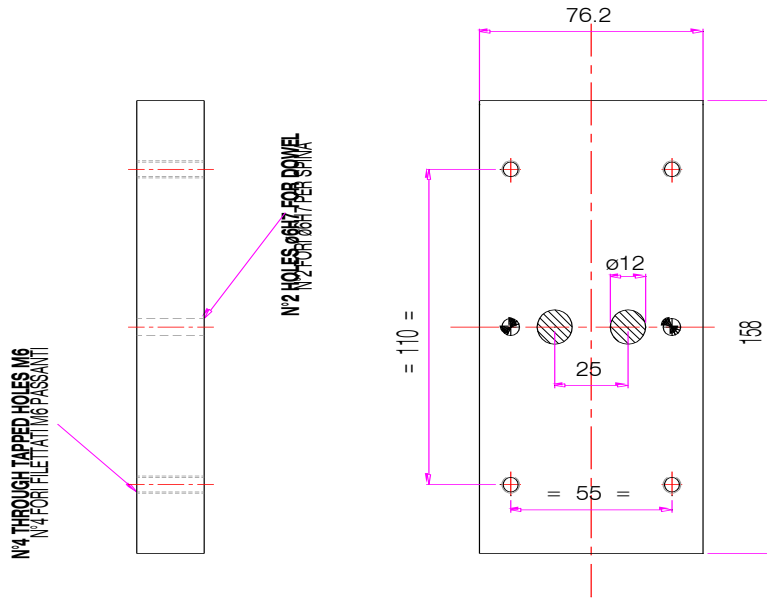
ITALPLANT srl si riserva di modificare le dimensioni senza preavviso
ITALPLANT srl reserves to modify quotes without advice



PBC 160

ITALPLANT
TRASPORTATORI A CINGHIA
PRECISION BELT CARRIERS

DETTAGLIO PALLET STANDARD
Standard pallet detail

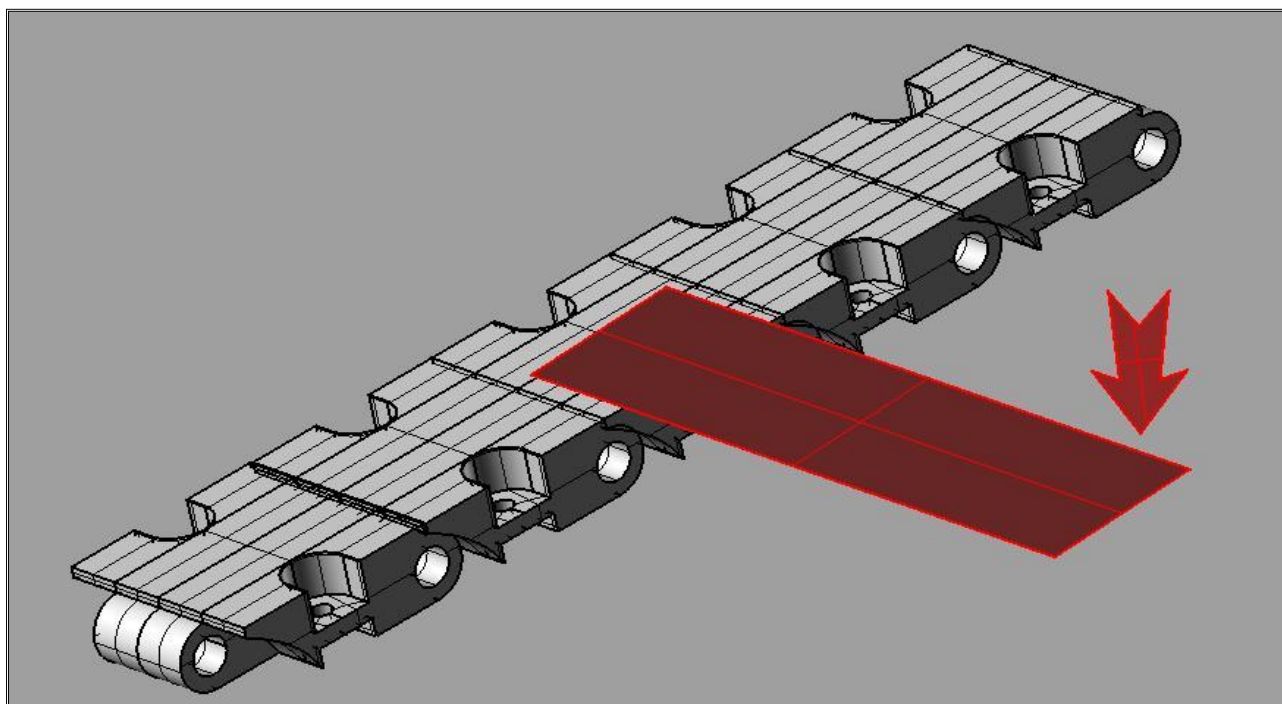


*(tolleranza solo per fori spine)
*(tolerance only for dowel holes)

Custom mounting holes on demand - dashed areas excluded
Forature personalizzabili su richiesta - escluse zone tratteggiate

BELT CONVEYORS – CAPACITA' DI CARICO

Ogni conveyor ITALPLANT mostra un limite di momento ribaltante in presenza di un carico fuori asse. La coppia è quella massima applicabile sulla superficie di contatto della maglia con le guide di scorrimento (carico limite). Sono qui di seguito riportati i massimi valori di carico assiale (per conveyor in disposizione Over-Under) e le coppie massime ammissibili.



LUNGHEZZA MAGLIA	CAPACITA' DI CARICO ASSIALE (Over-under)	MASSIMO MOMENTO RIBALTANTE
60	20 kg.	30 Nm
80	30 kg.	50 Nm
100	40 kg.	60 Nm
160	60 kg	80 Nm

NOTA: Queste capacità di carico sono assunte per carichi su maglie alternate. Se viene caricata ogni maglia, questi valori devono essere ridotti del 50%. Tali carichi si intendono applicati in stazione, a conveyor fermo, e non durante il trasporto. In caso contrario i valori devono essere calcolati dalla ITALPLANT in base alla velocità ed alla distanza dei carichi.

ITALPLANT PBC PRECISION BELT CARRIERS

PBC ACCURACY

ACCURACY

See this assembly drawing for 'XYZ' direction clarification.

All 'XYZ' accuracy measurements will be taken at the fixture locating dowel pin and inspected at the location indicated on the assembly drawing.

The 'Y' and 'Z' accuracy tolerance will remain the same at any given station along the entire length of the conveyor.

The 'X' direction tolerance value will be greatest at the links farthest from the drive sprocket and will improve with closer proximity to the sprocket.

ITALPLANT cannot put an exact value on this accuracy improvement and will only guarantee with the following values. These accuracy values relate to any given station not as one station relates to another. ITALPLANT will maintain an inspection report on this unit as well as supply the customer with a copy.

ACCURACY VALUES BY LINK SIZE

'X' accuracy 1 m length: ± 0.18 mm

'Y' accuracy (at any link): ± 0.18 mm

'Z' accuracy (at any link): ± 0.18 mm

All accuracy tolerances are plus and minus.

LENGTH DEVIATION

Due to the diametrical clearance requirement between the link pin and needle bearings, the overall length of the conveyor will deviate.

This deviation is dependant upon the number of links between the drive sprocket and takeup end and is progressive, starting at the drive end.

The maximum deviation from theoretical perfect station center will be at the link farthest from the drive sprocket.

This deviation does not effect the 'XYZ' accuracy of links as measured at any given station once the actual center has been established.

To compensate for this deviation, ITALPLANT recommends all station tooling be slotted to provide for adjustment at setup.

MAXIMUM DEVIATION

For the link the deviation will be ± 0.018 for link.

In all cases the deviation will be to the plus side.

