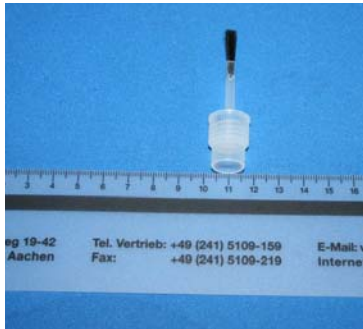




Sorting and Feeding of Nail Polish Brushes



Feeding Systems  
Reference no. 283



## Functional description:

### Industry

Cosmetics

### Components

Nail polish brushes.

### Performance requirements

Guiding the nail polish brushes with bristles attached through a lacquer bath, fitted by the customer below the suspended linear track.

The components need to dry for approximately 11 minutes before they can drop into a basin.

### Discharge position

Axis vertical, rad to rad , hanging from flange bristles pointing downwards.

### Functional description

The nail polish brushes are fed via the customers existing assembly machine hanging one behind the other into the linear track. The linear track is inclined for the first half which enables the bristles to be dipped into a lacquer bath.

They are then led out of the lacquer bath again through the ascending linear track and transferred to the subsequent drying tower.

The 11 minutes for component drying time is achieved via a guide track of about 52 metres in length.

### Performance

300 parts per minute.

### Control

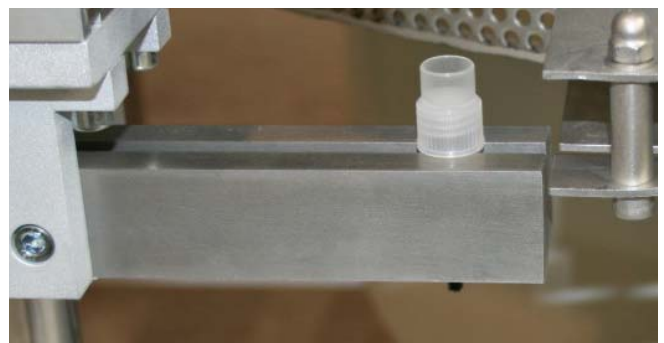
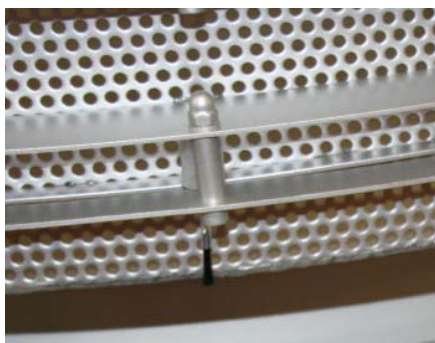
RNA Standard encased for protection

### Components of the feeding system

Vibratory bowl feeder type 800 and linear feeder type SLL 400.

### Design

V2A



**Technical contact:** Roddy Kearey  
roddyk@rna-uk.com



### RNA Automation Ltd

Hayward Industrial Park, Tameside Drive, Castle Bromwich, Birmingham, B35 7AG

Tel: +44 (0)121 749 2566 Fax: +44 (0)121 749 6217

Email: sales@rna-uk.com Web: www.rna-uk.com